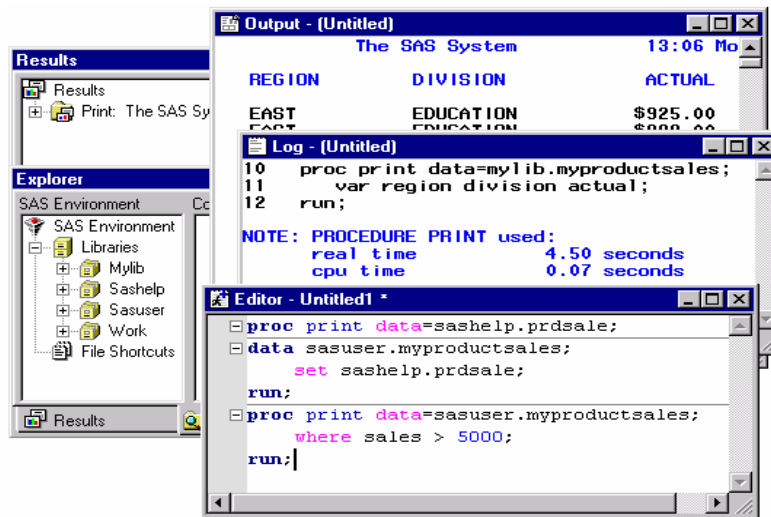


## Hands-On Experience Using SAS Software

The five main SAS windows are: the **Explorer**, **Results**, **Editor**, **Log**, and **Output windows**

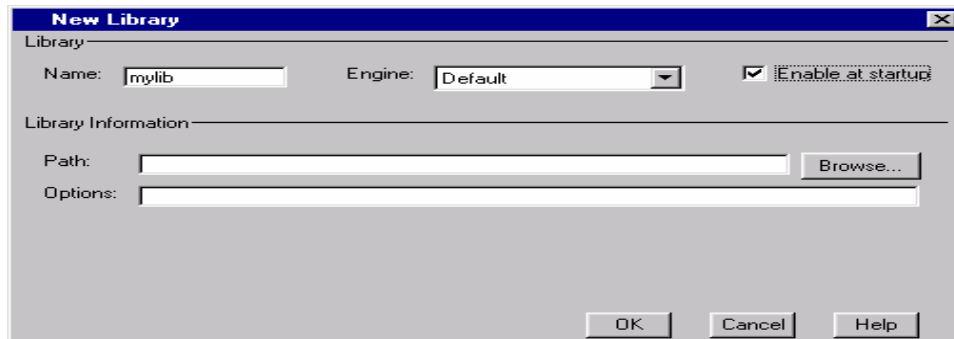


- In the **Explorer** window you can view and manage your SAS files- as opening, moving, copying, and deleting files- ; and create new libraries.
  - In the **Explorer** window, **double-click the Libraries folder**. The active libraries are listed.
  - **Double-click the Sashelp library**. All members in the Sashelp library are listed.
- In the **Editor** window : You can enter, edit, and submit SAS programs.
- The **Log** window displays messages about your SAS session and any SAS programs you submit.
- In the **Output** window, you can browse output from SAS programs you submit.
- The **Results** window helps you navigate and manage output from SAS programs you submit. You can view, save, and print individual items of output

### Assign a new library

- In the **Explorer** window, **double click the Libraries icon** . , select **File → New .** →**Type the new library Name** (for example **Mylib**) and leave the

**Default engine** selected → Select **Enable at startup** so that the library is created each time you start SAS.



- Click **Browse** and select a directory → Click **OK**

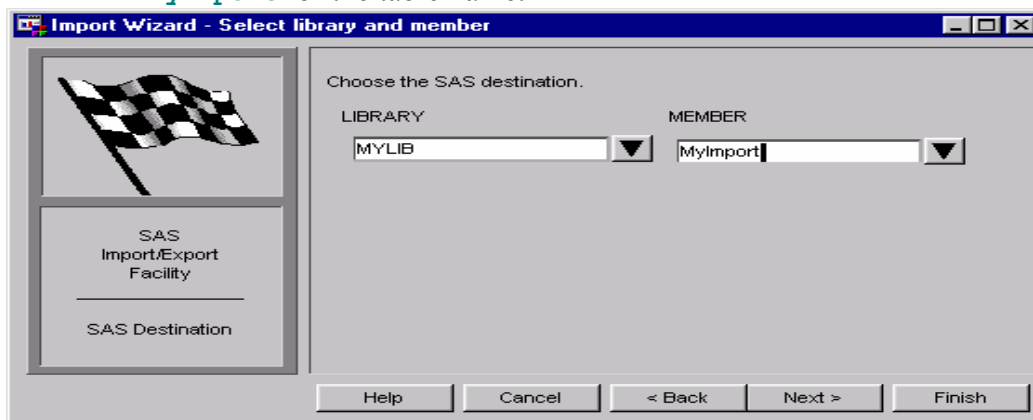
### Open an existing table

In the `VIEWTABLE` window, you can create a new table, or you can edit or browse an existing table. In the example below, you work with the table `Mylib.MyProductSales`, which contains sample data for product sales.

1. Select **Tools** → **Table Editor** → Select **File** → **Open** → select *Mylib* → Double-click *MyProductSales*.

### Import a file

- Select **File** → **Import Data** → Click the drop-down arrow for the list of **data sources**. → Click **Next to continue**. In the `Import Wizard - Select file` window, type the full path for your file or click `Browse` to find it.
- **Click Next to continue**. → Select **MYLIB** for the library name and type **MyImport** for the table name.

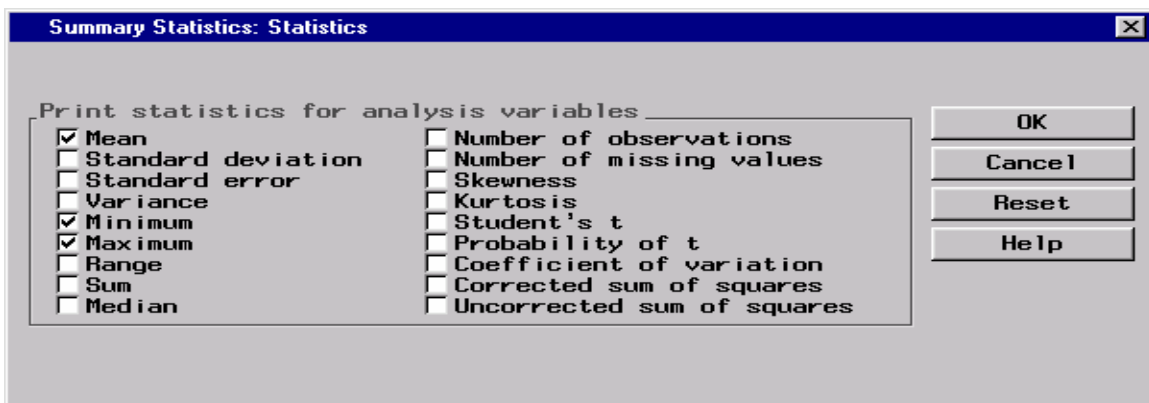


- **Click Next to continue**. Click **Finish**.
- To view the imported data Select **Tools** → **Table Editor** → **File** → **Open**.

**Start a project and open a table** Select **Solutions** → **Analysis** → **Analyst.** → Select **File** → **Open By SAS Name.** Under **Libraries,** select **Mylib.** Then select **Myproductsales.** Click **OK.**

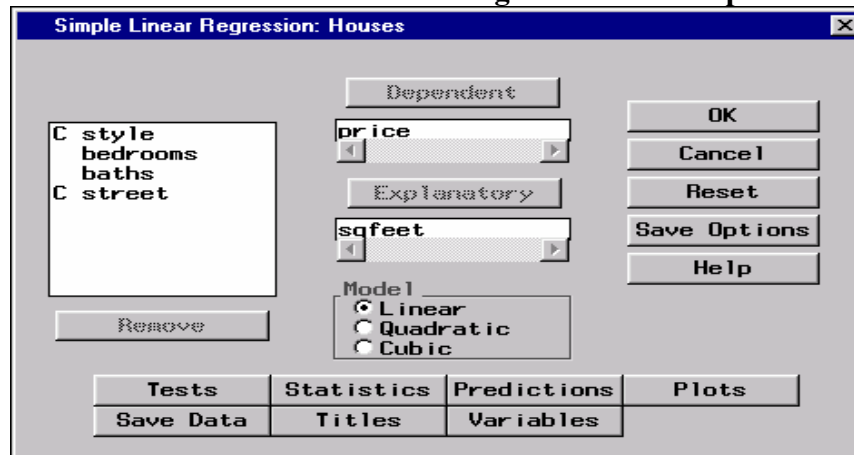
### Select a type of analysis, variables, and statistics

- Select **Statistics** → **Descriptive** → **Summary Statistics**
- Select **ACTUAL.** → **Analysis** → Select **PREDICT** → **Analysis.**
- Select **PRODTYPE** → Then click **Class** → Click **Statistics.** In the **Summary Statistics** check **Mean, Minimum, and Maximum** . Clear **Standard deviation** and **Number of observations.**

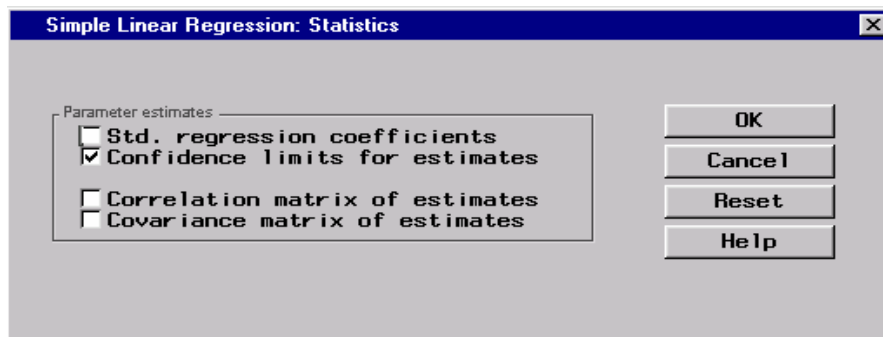


### Select a type of analysis, variables, and statistics

- Select **Tools** → **Sample Data** → select **HOUSES.** In the **Create in box,** leave the default **SASUSER.** Then click **OK.**
- Select **File** → **Open By SAS Name** → select **Sasuser.** Then select **Houses.** Click **OK.** → Select **Statistics** → **Regression** → **Simple.**



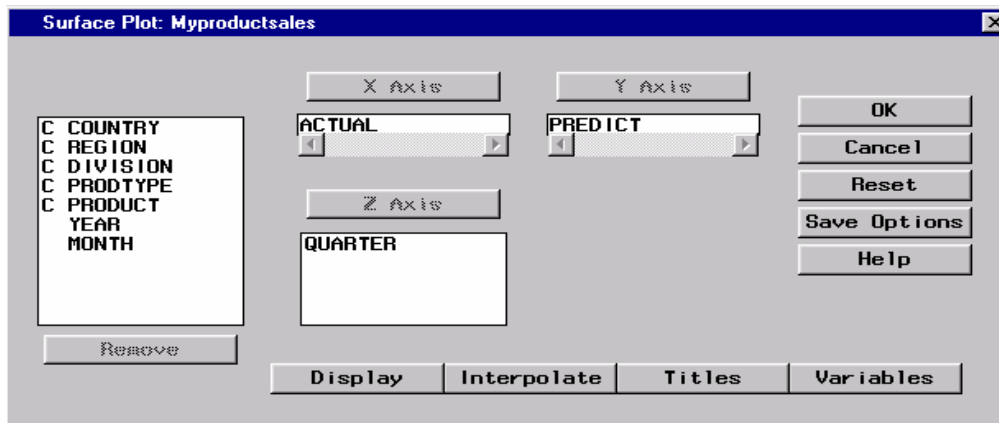
- Select **sqfeet**. → click **Explanatory**. → Under Model, leave the default Linear selected → Click **Statistics**. Under Parameter estimates, select **Confidence limits for estimates**. Click **OK** to run the analysis.



Scroll through output in the `Analysis` window. Select **File** → **Close**.

## Graphs

- Select **File** → **Open By SAS Name**. Under Libraries, select **Mylib**. Then elect **Myproductsales**. Click **OK** → Select **Graphs** → **Surface Plot**.



- Select **ACTUAL**. Then click **X Axis**. → Select **PREDICT**. Then click **Y axis**.
- Select **QUARTER**. Then click **Z Axis**.

## Save an entire project

- Select **File** → **Projects** → **Save**. In the Name box, type `My Project`. (For Path, leave the default value.)

◆ THE END ◆