

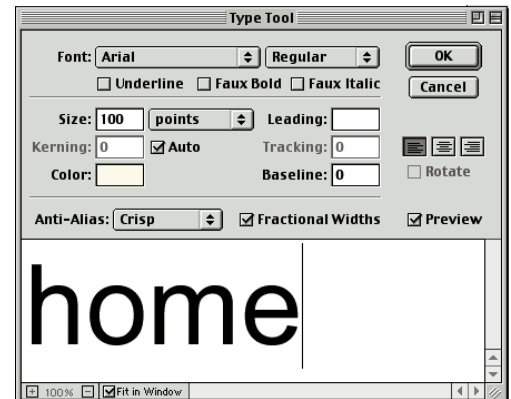


Photoshop

Photoshop Tutorial:

1. Open a new document by clicking File --> New. Change units from inches to pixels and make the document 600 x 600 pixels at a resolution of 72, RGB color and a white background.

2. Select the type tool and click in the working area - notice that a text box appears. All text is manipulated within this box. Write "Home." You can change the size, font and color of the text by using the options at the top of the type window. (see picture to the right)



3. Open the Layers menu by clicking Window --> Show Layers. Notice that the text you have created appears on a separate layer. This layer can be made visible or invisible by clicking on the eye icon, and can be manipulated independent of other layers. To edit type, double click on the layer containing the type you want to edit in order to bring up the type box.

4. Select the background layer in the layers palette. Select a color for your working area (the canvas) by double clicking on the top square (the foreground color) at the bottom of the toolbar and choosing a color from the color option window. Select the paint bucket tool and click in the Canvas.

5. Choose the rectangle tool from the toolbar. Click and drag your mouse across the canvas. You will notice that there are moving dotted lines in a rectangular shape on your canvas. This indicates that the area within the dotted lines have been selected. To color your rectangle, choose a different color and, using the paint bucket tool from the toolbar, click within your selected rectangle.

6. Now, try to change the scale, rotation or perspective of the rectangle. First, select your rectangle if it is not still selected by choosing the magic wand tool on the toolbar and clicking the inside area of your rectangle to get the marching ants. Now go to Edit --> Transform --> Scale/Rotate/etc. Experiment with these options. When you are done transforming your rectangle, double click inside the rectangle.

7. Now apply a filter to your rectangle. To do this, make sure your rectangle is still selected, then go to Filter at the top menu bar. Experiment with these options so you become familiar with their capabilities.

8. Next, go back to your type layer in the layers palette and select it. To add some effects to your type, go to Layer --> Effects --> Drop Shadow. Try different values and options. At the top of the window, you will see that you have a scroll menu. This menu contains many effects capabilities such as Bevel and Emboss, Inner Shadow and Color Fill. Try these to become familiar with the options. This option has many capabilities (see picture to the right).

